

# The Prognostic Value of Inflammation Indices in Predicting Postoperative ICU Admission and Mortality in Elderly Patients Undergoing Hip Fracture Surgery

Ökkeş Hakan Miniksar<sup>1</sup>, Mehmet Kara<sup>1</sup>, Muhammed Nuri Polat<sup>1</sup>, Yeşim Andıran Şenaylı<sup>1</sup>, Serhat Durusoy<sup>2</sup>,  
Hacı Ali Olçar<sup>2</sup>, Murat Korkmaz<sup>2</sup>

<sup>1</sup>Yozgat Bozok University Faculty of Medicine, Department of Anesthesiology and Reanimation, Yozgat, Turkey

<sup>2</sup>Yozgat Bozok University Faculty of Medicine, Department of Orthopedics and Traumatology, Yozgat, Turkey

## Abstract

**Objective:** This study aimed to assess the predictive impact of various inflammation indices and inflammatory biomarkers on postoperative intensive care unit (ICU) admission and mortality following hip fracture (HF) surgery in elderly patients.

**Materials and Methods:** We retrospectively reviewed the data of 131 geriatric patients who underwent isolated HF surgery under regional anesthesia. The patients were divided into two groups: ICU admission (ICU, n=98) and non-ICU admission (non-ICU, n=33). The patients were also grouped as survival (n=122) and non-survival (n=9) according to postoperative mortality rates. The patients' clinical characteristics and inflammation indexes were compared between the two groups, and predictors of ICU admission were determined using a multivariate regression model.

**Results:** Advanced age and high ASA scores were observed in the ICU and non-survivor groups. Urea and creatinine levels were significantly higher in the non-survivor group. While inflammatory indices [systemic immune-inflammation index (SII), neutrophil-to-lymphocyte ratio, and platelet-to-lymphocyte ratio] were significantly higher in the ICU group (respectively, p=0.009, p=0.022, p=0.019), they did not differ significantly in the mortality group. Age, ASA score, and SII of the inflammation indices were determined to be independent predictors of postoperative ICU admission after HF surgery.

**Conclusion:** It was shown that advanced age, high ASA score, and high preoperative SII value were independent risk factors for postoperative ICU admission following HF surgery in elderly patients. SII can be used as an easily measured prognostic parameter on the ICU admission of these surgical patients in daily practice.

**Keywords:** Geriatrics, hip fracture, systemic immune-inflammation index, intensive care, mortality

## Introduction

People on earth are getting older, and hip fractures (HF) are much more frequently seen in clinics due to aging. HF, mainly observed in elders, is a severe injury and causes a high mortality and morbidity of approximately 15–20% (1–4).

A decline in physical stamina and a rise in the prevalence of comorbidities are observed in elderly patients. Myocardial

infarction, pulmonary thromboembolism, heart failure, and infectious complications account for most mortality following HFs (2–5). These high-risk HF patients are usually treated in intensive care units after surgery, according to their clinical history and disease progression (6). The planned postoperative ICU admission of these high-risk patients helps to minimize adverse complications. Recognizing and targeting patients with adverse outcomes is an important part of treatment planning

**Address for Correspondence:** Ökkeş Hakan Miniksar, Yozgat Bozok University Faculty of Medicine, Department of Anesthesiology and Reanimation, Yozgat, Turkey

**E-mail:** hminiksar@yahoo.com **ORCID:** orcid.org/0000-0001-5645-7729

**Received:** 27.01.2023 **Accepted:** 11.08.2023

**Cite this article as:** Miniksar ÖH, Kara M, Polat MN, Andıran Şenaylı Y, Durusoy S, Olçar HA, Korkmaz M. The Prognostic Value of Inflammation Indices in Predicting Postoperative ICU Admission and Mortality in Elderly Patients Undergoing Hip Fracture Surgery. Eur J Geriatr Gerontol

©Copyright 2023 by the Academic Geriatrics Society / European Journal of Geriatrics and Gerontology published by Galenos Publishing House.

for geriatric HF surgery. A surgical patient's decision to be admitted to the ICU is not dependent on a single factor and is complex (1,2,6,7). We, clinicians, need to determine the pre-operative predictors that will affect this ICU admission decision. Recognizing and targeting patients with adverse outcomes is an important part of treatment planning for geriatric HF surgery. Accurate prognostic predictors can provide valuable information on postoperative outcomes, and patients with such indicators can receive additional aggressive therapies to improve survival (4,7,8).

Several studies have shown the relationship between specific laboratory results and various factors causing intensive care unit admission and mortality in elderly patients after HF surgery (9–11). According to previous reports, other inflammatory markers have also been associated with mortality (1–8). Therefore, in addition to these laboratory parameters, there is still a need in daily practice for an ideal readily measured marker, such as hematological parameters, to predict postoperative clinical outcomes. Nevertheless, to the best of our knowledge, no standard inflammatory biomarkers or a scoring system can be used in clinical practice to predict the postoperative outcomes of elderly HF surgery patients based on the inflammation status. Therefore, we assumed in our study that these indices could be independent predictors of ICU admission and mortality rates in elderly patients after HF surgery.

Our objective was to determine and evaluate the predictive value of several inflammatory indices and inflammatory biomarkers on prognosis in elderly patients undergoing HF surgery.

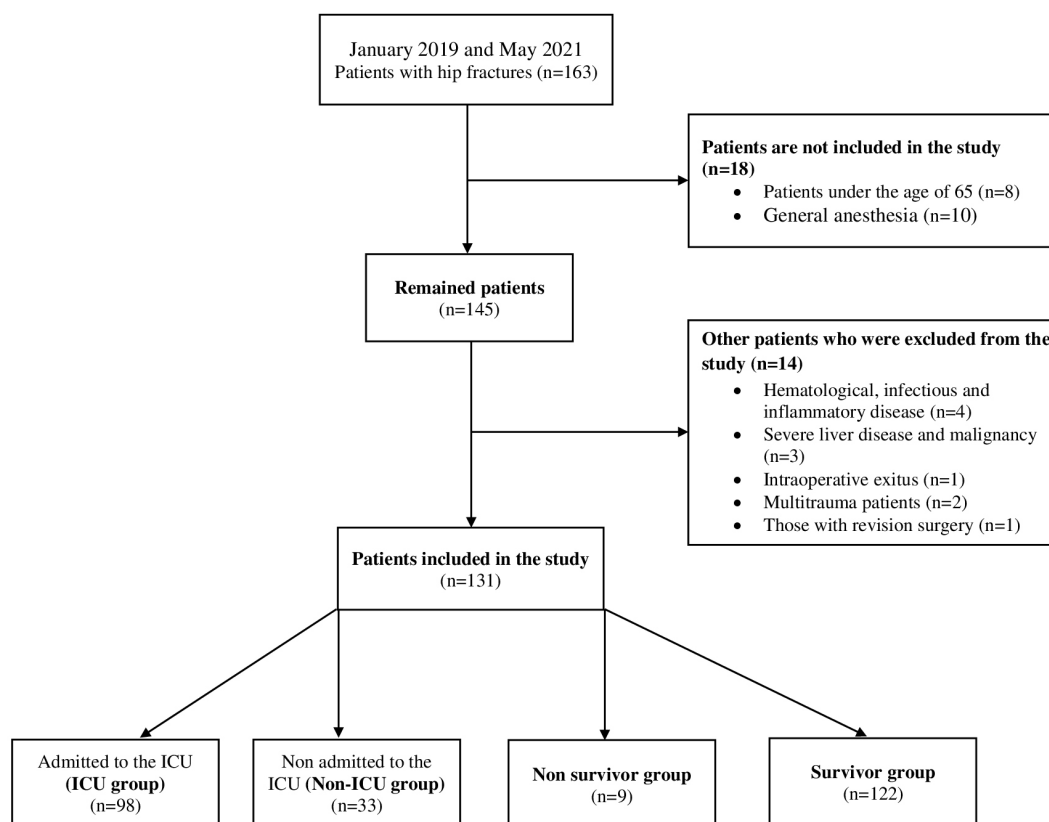
## Materials and Methods

### Ethical Statement

The Yozgat Bozok University Clinical Research Ethics Committee approved this retrospective observational single-center study in accordance with the Declaration of Helsinki (no: 189\_2021.08.25\_02).

### Study Design

This study reviewed the clinical findings of 163 patients who received isolated HFs because of minor trauma caused by falls at our department between January 2019 and May 2021. Patients included in the study had an ASA (American Society of Anesthesiologists) score of 2/3/4, were over 65 years of age, and were treated with regional anesthesia. General anesthesia, age 65 years, hematologic abnormalities, infectious and inflammatory disease, intraoperative mortality, revision surgery, history of severe liver disease and malignancy, multiple traumas, and missing records were among the study's exclusion criteria. The study included 131 participants when the exclusion criteria were applied (Figure 1). STROBE guidelines were used during presentation preparations. ([www.strobe-statement.org](http://www.strobe-statement.org)).



**Figure 1.** Flow chart of the study participants

## Study Participants

Demographic characteristics, comorbidities, ASA scores, intervention time, and patients' preoperative laboratory data were recorded. Both electronic and hard-copy hospital archives were evaluated to obtain data on patient files and perioperative anesthesia. The period between hospitalization and surgery was defined in days.

The patients were divided into two groups for evaluation: the ICU and non-ICU groups. The anesthesiologist decided to admit the patient to the ICU on the basis of the patient's postoperative clinical status. This study included patients who underwent operations under regional anesthesia. For the ICU group, these patients were also evaluated as the Survivor Group and Non-survivor Group according to mortality. Medical departments such as cardiology, respiratory disease, or internal medicine evaluated all patients in the pre-operative period. Consultation records were reviewed to evaluate the possible presence of comorbidities in the patients during the pre-operative period. The patients who were admitted for the first time to the ICU were accepted. The team consisted of anesthetists, orthopedic surgeons, and internal medicine specialists who followed the patients postoperatively.

## Laboratory Measurements

One day before surgery, venous blood samples (complete blood count, or CBC) were routinely taken from each patient and recorded in the hospital's medical records. Test results were obtained using a blood analyzer (Beckman Coulter®, LH 780, California, USA). The inflammatory indices were calculated from whole blood assays as follows: systemic immune-inflammation index (SII) [(neutrophils x platelets)/lymphocytes], neutrophil-to-lymphocyte ratio (NLR) (neutrophil/lymphocyte), neutrophil-to-lymphocyte, platelet ratio (NLPR) [neutrophil/(lymphocyte x platelet)], platelet-to-lymphocyte ratio (PLR) (platelet/lymphocyte), and mean platelet volume/platelet (MPR) (mean platelet volume/platelet).

## Statistical analysis

Statistics were analyzed using IBM SPSS for Windows, version 25.0 (IBM Corp., Armonk, NY, USA). Categorical data were presented in n and frequency, while continuous data were presented in mean  $\pm$  standard deviation (SD) and median [interquartile range; 25<sup>th</sup>-75<sup>th</sup> percentile]. The Kolmogorov-Smirnov and Shapiro-Wilk tests checked the normality distribution. If more than 20% of the expected values in the cross tables were less than 5, or if at least one of the values was less than 2, Fisher's exact test was performed. All significant variables (age, ASA, SII, NLR, and PLR) were included in the multivariate logistic analysis after the univariate analysis. Factors that predict postoperative ICU admission were investigated using a backward stepwise multivariate logistic regression analysis. The

Hosmer and Lemeshow test for goodness-of-fit statistics was used to determine the calibration validation and discrimination of this regression analysis. Receiver operating characteristic (ROC) curve analysis was used to determine the parameters and inflammation indices with the most significant predictive value for postoperative ICU admissions, and the areas under the curve (AUC) were calculated. A statistically significant difference was defined as a p value of 0.05.

## RESULTS

### Demographic and Clinical Characteristics

A total of 131 patients in 163 met the inclusion criteria for statistical analysis with HF diagnoses who underwent surgery throughout the study period. The mean age (SD) of all patients was 82.66 (5.44), with 74 (56.5%) being female. Thirty-three patients (25.2%) and 98 patients (74.8%), respectively, comprised the non-ICU and ICU groups. The patient's mean age in the ICU group was 83.6 years, compared with 80.4 years in the non-ICU Group ( $p=0.005$ ). Nine patients (6.9%) were included in the non-survivor group, whereas 122 patients (93.1%) were included in the Survivor group. In the Survivor Group, the patients' median age ranged from 78 to 86 years; in the Non-survivor Group, it was 90 to 94 ( $p=0.021$ ). The difference in ASA physical status between the groups was statistically significant ( $p=0.002$  for the ICU group and  $p=0.018$  for the Survivor group). There was no statistically significant difference between the groups for the most common comorbidities, which were hypertension (58.0%), diabetes mellitus (29.8%), and coronary artery disease (27.5%). (Table 1).

### Biochemical and Total Blood Count Parameters and Inflammation Indices

When laboratory parameters were examined, urea was significantly higher in the ICU and non-survivor groups ( $p=0.002$  and  $p=0.037$ , respectively). Creatinine was higher only in the non-survivor group ( $p=0.047$ ). SII ( $p=0.009$ ), NLR ( $p=0.022$ ), and PLR ( $p=0.019$ ) inflammatory indices were significantly higher in the ICU group. Inflammatory indices did not differ significantly between the survivors (Table 2).

### Risk Factors for ICU Admission Using Univariate and Multivariate Analyses

The results of univariate and multivariate logistic regression analyses for ICU admission in patients undergoing HF surgery are shown in Table 3. In univariate analysis, the following preoperative variables were found to be important predictors of postoperative ICU admission: Age [odds ratio (OR) =1.128; 95% confidence interval (CI) 1.033-1.233;  $p=0.008$ ], ASA (OR =3.332; 95% CI 1.463-7.590;  $p=0.004$ ), SII (OR =1.001; 95% CI 1.000-1.001;  $p=0.013$ ), NLR (OR =1.117; 95% CI 1.014-1.231;  $p=0.025$ ), and PLR (OR =1.005; 95% CI 1.001-1.009;  $p=0.027$ ).

**Table 1. Comparison of demographic and clinical characteristics between the ICU admission and mortality groups**

Variables	Non-ICU group (n=33)		ICU group (n=98)		P value	Non-survivor group (n=9)		Survivor group (n=122)		P value
	n	%	n	%		n	%	n	%	
Age (years), mean (SD) [25-75 p.]	80	(4)	83	(6)	0.005 <sup>1</sup>	90	[80-94]	81	[78-86]	0.021 <sup>2</sup>
Time before surgery (days)	2	[1-2]	2	[1-2]	0.606 <sup>2</sup>	1	[0-2]	1	[1-2]	0.376 <sup>1</sup>
Gender, female (n=74)	16	48.5	58	59.2	0.284 <sup>#</sup>	3	33.3	71	58.2	0.147 <sup>*</sup>
ASA physical status, II/III/IV	7	21.2	3	3.1	0.002 <sup>#</sup>	0	0.0	10	8.2	0.018 <sup>*</sup>
	21	63.6	65	66.3		3	33.3	83	68.0	
	5	15.2	30	30.6		6	66.7	29	23.8	
Comorbidities, n (%)										
Hypertension, (n=76)	19	57.6	57	58.2	0.067 <sup>#</sup>	5	55.6	71	58.2	0.877 <sup>*</sup>
Congestive heart failure, (n=22)	4	12.1	18	18.4	0.406 <sup>*</sup>	2	22.2	20	16.4	0.652 <sup>*</sup>
Diabetes mellitus, (n=39)	13	39.4	26	26.5	0.162 <sup>#</sup>	2	22.2	37	30.3	0.608 <sup>*</sup>
Cerebrovascular disease, (n=26)	5	15.2	21	21.4	0.434 <sup>*</sup>	4	44.4	22	18.0	0.055 <sup>*</sup>
Arrhythmia, (n=20)	3	9.1	17	17.3	0.254 <sup>*</sup>	3	33.3	17	13.9	0.118 <sup>*</sup>
Coronary artery disease, (n=36)	5	15.2	31	31.6	0.067 <sup>*</sup>	4	44.4	32	26.2	0.237 <sup>*</sup>
Chronic renal failure, (n=9)	2	6.1	7	7.1	0.832 <sup>*</sup>	1	11.1	8	6.6	0.602 <sup>*</sup>
Chronic lung disease, (n=17)	2	6.1	15	15.3	0.172 <sup>*</sup>	1	11.1	16	13.1	0.863 <sup>*</sup>
The values are presented as the mean (SD) and median [interquartile range] for continuous variables and number and percentage for categorical variables. Compared by the <sup>1</sup> independent t-test and <sup>2</sup> Mann-Whitney U test for continuous variables. All statistically significant values are reported in bold. ICU: Intensive care unit, ASA: American Society of Anesthesiologists, MPV: Mean platelet volüete, SII: Systemic immune-inflammation index, NLR: Neutrophil to lymphocyte ratio, NLRP: Neutrophil to lymphocyte, platelet ratio, PLR: Platelet to lymphocyte ratio, MPR: Mean platelet volume/platelet										

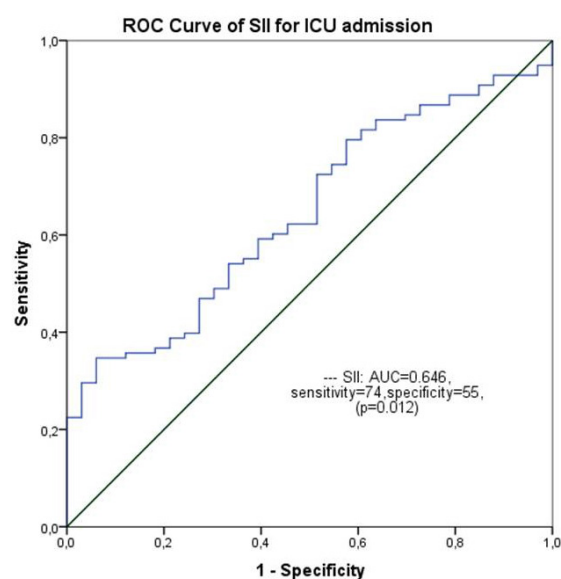
Multivariate analysis revealed that age (OR =1.118; 95% CI 1.015–1.231;  $p=0.023$ ), ASA (OR =2.572; 95% CI 1.101–6.007;  $p=0.029$ ) and SII (OR =1.001; 95% CI 1.000–1.001;  $p=0.021$ ) were independent predictors of postoperative ICU admission. Other important variables (NLR, PLR) were not independent predictors of ICU admission. The Hosmer–Lemeshow goodness-of-fit test indicated a well-calibrated model ( $\chi^2=6.933$ ;  $df=8$ ;  $p=0.544$ ).

### Predictive Accuracy of SII for ICU Admission

ROC analysis determined the cut-off SII based on the differences between the ICU and non-ICU groups. The cut-off point was established as 1001.61 [AUC of 0.646 (95% CI 0.546–0.747) with 74% sensitivity and 55% specificity;  $p=0.012$ ] for postoperative ICU admission SII (Figure 2).

## Discussion

There is still no universal consensus, despite the large number of clinical trials that have been reported that have shown a relationship between several inflammatory markers and



**Figure 2.** ROC curve of the relationship between SII and admission to the ICU

ICU: Intensive care unit

**Table 2. Comparison of laboratory parameters and inflammation indices between the ICU admission and mortality groups**

Variables	Non-ICU group (n=33)		ICU group (n=98)		P value <sup>1</sup>	Non-survivor group (n=9)		Survivor group (n=122)		P value <sup>2</sup>
	Mean	SD	Mean	SD		Median	25-75 p.s	Median	25-75 p.s	
Biochemical parameters										
Glukoz (mmol/L)	161	78	158	75	0.833	133	107-161	135	108-183	0.504
Sodyum (mmol/L)	138	5	138	7	0.682	138	137-139	138	136-140	0.945
Urea (mg/dL)	217	61	238	92	<b>0.002</b>	239	206-254	227	186-269	<b>0.037</b>
Creatinin (mg/dL)	0.97	0.48	1.06	0.50	0.390	1.31	0.89-1.39	0.89	0.74-1.14	<b>0.047</b>
Albumin (g/dL)	3.85	.56	4.57	5.31	0.440	3.65	3.56-3.81	3.75	3.45-4.02	0.356
Total blood count										
Hemoglobin (g/dL)	12.73	2.08	11.85	2.02	0.033	11.90	10.1-12.7	12.05	10.9-13.4	0.598
Neutrophils (x10 <sup>9</sup> L)	0.03	0.03	0.04	0.03	0.056	0.05	0.02-0.08	0.03	0.01-0.05	0.277
Lymphocytes (x10 <sup>9</sup> L)	1.50	0.69	1.34	0.75	0.280	0.94	0.56-2.21	1.26	0.87-1.7	0.437
Platelets (x10 <sup>9</sup> L)	217	61	238	92	0.238	239	206-254	227	186-269	0.967
MPV (fL)	10.22	1.02	10.14	0.85	0.643	9.90	9.6-10.4	10.00	9.5-10.7	0.685
Inflammatory indices										
SII	1229.32	751.29	2132.54	1912.93	<b>0.009</b>	1210.60	1001.85-4007.51	1305.45	723.85-2466.98	0.601
NLR	6.04	3.73	8.58	5.88	<b>0.022</b>	10.02	3.44-16.76	6.71	3.80-10.52	0.385
NLPR	0.03	0.03	0.04	0.03	0.215	0.05	0.02-0.08	0.03	0.016-0.053	0.185
PLR	165.59	66.67	234.09	161.10	<b>0.019</b>	185.19	109.95-423.33	162.76	119.42-260.39	0.788
MPR	0.05	0.02	0.05	0.02	0.494	0.04	0.039-0.056	0.05	0.036-0.057	0.982
Data are presented as the mean (SD) and median (interquartile range] for continuous variables and number and percentage for categorical variables. Compared by the <sup>1</sup> ndependent t-test and <sup>2</sup> Mann-Whitney U test for continuous variables. Compared by the <sup>3</sup> Chi square test and <sup>4</sup> Yates' Yates' correction for continuity. Statistical significance was set at 0.05. All statistically significant values are reported in bold. ICU: Intensive care unit, ASA: American Society of Anesthesiologists, MPV: Mean platelet volüete, SII: Systemic immune-inflammation index, NLR: Neutrophil to lymphocyte ratio, NLPR: Neutrophil to lymphocyte, platelet ratio, PLR: Platelet to lymphocyte ratio, MPR: Mean platelet volume/platelet										

postoperative outcomes in elderly HF surgery patients. This study examined the relationship between postoperative ICU hospitalization, mortality, and serum inflammatory markers and indices in geriatric patients undergoing elective HF surgery. In the current study, several significant results were identified. First, patients admitted to the postoperative ICU, with observed mortality had higher ASA scores and urea levels and were older. Second, although inflammation indices (SII, NLR, and PLR) were higher in the ICU group, they did not differ significantly in the mortality group. Third, advanced age, high ASA score, and SII of the inflammation indices were determined to be independent predictors of postoperative ICU admission after geriatric HF surgery.

In previous studies, advanced age was shown to be a risk factor for HF surgery (12,13). Forget et al. (12) developed a score that included age, gender, and NLR at D5 to estimate the risk of death at one year in elderly patients after HF surgery. Conversely, other studies have reported that advanced age is not a risk factor for mortality (14-16). In the current study, being old with a high ASA score was defined as an independent risk factor for admission to the ICU and mortality. A strong relationship between age and the ASA score is known. There is an increase in comorbidities associated with advanced age. This risky situation also contributes to postoperative mortality and ICU admission decisions. In addition, the high mean age of the included patients may have contributed to the results of our

**Table 3. Predictors of ICU admission using univariate and multivariate analysis**

Variables	Univariate analysis				Multivariate analysis			
	OR	(95 CI) Lower	Upper	P	OR	(95 CI) Lower	Upper	P
Age	1.128	1.033	1.233	0.008	1.118	1.015	1.231	0.023
ASA	3.332	1.463	7.590	0.004	2.572	1.101	6.007	0.029
SII	1.001	1.000	1.001	0.013	1.001	1.000	1.001	0.021
NLR	1.117	1.014	1.231	0.025	--	--	--	--
PLR	1.005	1.001	1.009	0.027	--	--	--	--

Hosmer and Lemeshow Test ( $\chi^2=6.933$ ; df: 8;  $p=0.544$ ), Nagelkerke R Square =0.249,  $p<0.001$ . Multivariate Model's Adjusted  $R^2=0.183$ ,  $p$  value  $<0.001$ .  
CI: Confidence interval, ASA: American Society of Anesthesiologists, SII: Systemic immune inflammation index, NLR: Neutrophil-to-lymphocyte ratio, PLR: Platelet-to-lymphocyte ratio.

study. Although inconsistent results have been reported in the literature, our results indicate that advanced age is a significant risk factor for the prognosis of this critical surgery.

Recently, many studies have examined the relationship between inflammation and the outcomes of elderly patients. It has been reported that many inflammation markers are associated with prognosis in major orthopedic surgeries, such as HF. The most analyzed of these markers is NLR (13-18). Forget et al. (13) reported that mortality at one year was higher in patients with HF with an NLR  $>5$  on D5. The NLR value at the time of admission of elderly patients who had undergone HF surgery may be used for mortality-related risk classification, according to Temiz and Ersöz (18) report in another investigation. On the contrary, in the study by Altinsoy et al. (17), it was reported that there was no relationship between NLR value and postoperative short-term mortality and morbidity in patients with HF. The authors consider the small number of non-survival patients as the reason for this different result. Similarly, in our study, although preoperative NLR value was not associated with postoperative ICU mortality, it was associated with ICU admission. Elevated NLR was also found to be an independent predictor of admission to the ICU. There are few patients in the mortality group, and we must interpret our results cautiously.

In an experimental rat study, systemic inflammation mediators were reported as potential biomarkers in the diagnosis and prognosis of acute lung injury, a fatal complication after HF (19). In another clinical study, increased concentrations of inflammatory cytokines (TNF- $\alpha$ , IL-6, and IL-10) in elderly patients with HF represented independent risk factors for adverse postoperative outcomes (20). The underlying mechanism activates the inflammatory response of neutrophils activated after trauma. Increased stress is the cause of systemic changes that cause an increase in neutrophil counts and a decrease in lymphocyte counts. Vascular damage is induced by activated platelets and neutrophils, leading to endothelial dysfunction

and coagulation disorders (21). SII, an inflammatory biomarker, depends on peripheral platelet, neutrophil, and lymphocyte counts, and it appears to be a useful prognostic indicator for some diseases (9,11). In a recent study, older patients with HF undergoing surgery had lower all-cause mortality when their SII was high (9). In our study, inflammation indices (SII, NLR, PLR) were predictors of ICU admission in univariate regression analysis, whereas SII was an independent risk factor in multivariate regression analysis. Therefore, we thought that an elevated SII level might be a possible predictor of admission to the ICU, an adverse postoperative outcome in older adults with HFs. In addition, it is crucial to determine preventive plans for postoperative ICU admission management according to this inflammation index in elderly patients with HF.

Another significant result of our study is that increased PLR, another inflammatory index, predicts admission to the ICU. Bala (22) reported that increased PLR on the second postoperative day was an effective predictor of survival in patients who underwent hemiarthroplasty. Similarly, another study showed that a high PLR ( $\geq 189$ ) can result in increased one-year all-cause mortality in old HF patients (23). The authors reported that because PLR is an easily used simple indicator obtained during routine blood testing, it can be easily found in clinical practice. Although if the PLR level is high, the prognosis will be poor in these patients, the possible underlying mechanism is not precise. Additional research is necessary to understand the predictive ability of these inflammatory indices and to include the predictors in a new scoring system.

Furthermore, our study showed that urea and creatinine levels were significantly associated with ICU mortality and ICU admission. These risk factors have also been defined in other studies (24,25). Mosfeldt et al. (24) reported that 3-month mortality in elderly patients with HF increased threefold in those with high creatinine levels. Laulund et al. (11) concluded that high creatinine plasma levels have predictive significance for



mortality in patients with HF after performing a meta-analysis of 15 studies. Preoperative correction of abnormalities in these biochemical laboratory values associated with mortality may positively affect postoperative prognosis.

### Study Limitations

However, it is essential to acknowledge that this study has several limitations. First, there may be selection bias because the study was retrospective and single-centered. As a result, we are forced to rely only on the outcomes of patients at our facility. Many parameters such as the type of ICU, capacity, patient population, and anesthesiologist- surgeon relationship can affect a patient's admission to the ICU. Second, various variables contributed to the patient's admission to the intensive care unit. Third, a thorough study with a larger sample size is required to support the existing data because there were few patients in the non-survivor group throughout the relevant period. The conclusion of a causal association between inflammatory indices and surgical outcomes is thus limited, despite the small sample size of patients.

### Conclusion

The study's primary finding is that old age, a high ASA score, and a high preoperative SII value all independently increase the probability of an elderly patient with HF being admitted to the ICU after surgery. The SII value can be employed as an easily measured prognostic parameter in the routine management of critical surgical patients. The reproducibility and generalizability of our study findings need to be examined in more extensive multicenter clinical studies.

**Acknowledgement:** The authors would also like to thank all of the staff in the Department of Anesthesiology and Orthopedics and Traumatology for their fundamental support during the study (Yozgat Bozok University, Medical Faculty Hospital, Yozgat, Turkey). In addition, the authors are grateful to the anesthesiologist M.D. (Ahmet Yüksek and Cevdet Yardımcı) and anesthesiology residents M.D. (Ayşegül Parlak Çıkrıkçı and Hakan Öz) for their support throughout the study.

### Ethics

**Ethics Committee Approval:** The Yozgat Bozok University Clinical Research Ethics Committee approved this retrospective observational single-center study in accordance with the Declaration of Helsinki (no: 189\_2021.08.25\_02).

**Peer-review:** Externally peer reviewed.

### Authorship Contributions

Surgical and Medical Practices: Ö.H.M., M.K., M.N.P., Concept: Ö.H.M., M.K., M.N.P., Y.A.Ş., S.D., H.A.O., M.K., Design: Ö.H.M., M.K., M.N.P., Y.A.Ş., S.D., H.A.O., M.K., Data

Collection or Processing: Ö.H.M., M.K., M.N.P., Y.A.Ş., S.D., H.A.O., M.K., Analysis or Interpretation: Ö.H.M., Literature Search: Ö.H.M., Y.A.Ş., Writing: Ö.H.M., Y.A.Ş.

**Conflict of Interest:** No conflict of interest was declared by the authors.

**Financial Disclosure:** The authors declared that this study received no financial support.

### References

1. Fisher AA, Davis MW, Rubenach SE, Sivakumaran S, Smith PN, Budge MM. Outcomes for older patients with hip fractures: the impact of orthopedic and geriatric medicine care. *J Orthop Trauma* 2006;20(3):172-178; discussion 179-180.
2. Hu F, Jiang C, Shen J, Tang P, Wang Y. Preoperative predictors for mortality following hip fracture surgery: a systematic review and meta-analysis. *Injury* 2012;43(6):676-685.
3. Durusoy S, Paksoy AE, Korkmaz M, Dağlar B, Elibol FKE. The effect of medullary fill on varus collapse in AO 31A3 intertrochanteric (reverse obliquity) fracture treated with cephalomedullary nails. *Orthop Traumatol Surg Res* 2021;107(3):102804.
4. Koval KJ, Chen AL, Aharonoff GB, Egol KA, Zuckerman JD. Clinical pathway for hip fractures in the elderly: the Hospital for Joint Diseases experience. *Clin Orthop Relat Res* 2004;(425):72-81.
5. Paksoy AE, Öner K, Polat F, Durusoy S. Is 48 h a critical cut-off point for mortality in geriatric hip fractures? *Turk J Med Sci* 2020;50(6):1546-1551.
6. Pirat A, Candan S, Canikli S, Erkaya S, Zeyneloğlu P, Arslan G, Karaeminoğulları O. Predictors of Intensive Care Unit Admission in Geriatric Patients Undergoing Hip Replacement. *Crit Care Med* 2004;32(Supplement):A72.
7. Onwochei DN, Fabes J, Walker D, Kumar G, Moonesinghe SR. Critical care after major surgery: a systematic review of risk factors for unplanned admission. *Anaesthesia* 2020;75 Suppl 1: 62-74.
8. Jang IY, Lee YS, Jung HW, Chang JS, Kim JJ, Kim HJ, Lee E. Clinical outcomes of perioperative geriatric intervention in the elderly undergoing hip fracture surgery. *Ann Geriatr Med Res* 2016;20:125-130.
9. Wang ZC, Jiang W, Chen X, Yang L, Wang H, Liu YH. Systemic immune-inflammation index independently predicts poor survival of older adults with hip fracture: a prospective cohort study. *BMC Geriatr* 2021;21:155.
10. Samuel D, Bhat AN, Prabhu VM. Platelet Indices as Predictive Markers of Prognosis in Critically Ill Patients: A Prospective Study. *Indian J Crit Care Med* 2020;24:817-822.
11. Laulund AS, Lauritzen JB, Duus BR, Mosfeldt M, Jørgensen HL. Routine blood tests as predictors of mortality in hip fracture patients. *Injury* 2012;43:1014-1020.
12. Forget P, Dillien P, Engel H, Cornu O, De Kock M, Yombi JC. Use of the neutrophil-to-lymphocyte ratio as a component of a score to predict postoperative mortality after surgery for hip fracture in elderly subjects. *BMC Res Notes* 2016;9:284.
13. Forget P, Moreau N, Engel H, Cornu O, Boland B, De Kock M, Yombi JC. The neutrophil-to-lymphocyte ratio (NLR) after surgery for hip fracture (HF). *Arch Gerontol Geriatr* 2015;60:366-371.
14. Niessen R, Bihin B, Gourdin M, Yombi JC, Cornu O, Forget P. Prediction of postoperative mortality in elderly patient with hip fractures: a single-centre, retrospective cohort study. *BMC Anesthesiol* 2018;18:183.
15. Özbek EA, Ayanoğlu T, Olçar HA, Yalvaç ES. Is the preoperative neutrophil-to-lymphocyte ratio a predictive value for postoperative mortality in orthogeriatric patients who underwent proximal femoral nail surgery for pertrochanteric fractures? *Ulus Travma Acil Cerrahi Derg* 2020;26:607-612.

16. Miniksar OH, Kaçmaz O. The effect of neutrophil-lymphocyte ratio on admission to postoperative intensive care and mortality in elderly patients undergoing hip fracture surgery with spinal anesthesia. *Eur Res J* 2021;7:628-634.
17. Altinsoy S, Çatalca S, Sayin M, Ergil J. The effect of neutrophil to lymphocyte ratio on postoperative early mortality and morbidity in hip fracture intensive care patients. *Anestezi Derg* 2018;26:234-237.
18. Temiz A, Ersözlü S. Admission neutrophil-to-lymphocyte ratio and postoperative mortality in elderly patients with hip fracture. *Ulus Travma Acil Cerrahi Derg* 2019;25:71-74.
19. Gan L, Sun T, Li B, Tian J, Zhang J, Chen X, Zhong J, Yang X, Li Q. Serum miR-146a and miR-150 as Potential New Biomarkers for Hip Fracture-Induced Acute Lung Injury. *Mediators Inflamm* 2018;2018:8101359.
20. Sun T, Wang X, Liu Z, Chen X, Zhang J. Plasma concentrations of pro- and anti-inflammatory cytokines and outcome prediction in elderly hip fracture patients. *Injury* 2011;42:707-713.
21. Fisher A, Srikusalanukul W, Fisher L, Smith P. The Neutrophil to Lymphocyte Ratio on Admission and Short-Term Outcomes in Orthogeriatric Patients. *Int J Med Sci* 2016;13:588-602.
22. Bala MM. The benefit of dynamic neutrophil-lymphocyte ratio and systemic immune-inflammation index in predicting survival in patients undergoing hemiarthroplasty. *Eur Rev Med Pharmacol Sci* 2022;26:3878-3885.
23. Wang Z, Wang H, Yang L, Jiang W, Chen X, Liu Y. High platelet-to-lymphocyte ratio predicts poor survival of elderly patients with hip fracture. *Int Orthop* 2021;45:13-21.
24. Mosfeldt M, Pedersen OB, Riis T, Worm HO, Mark Sv, Jørgensen HL, Duus BR, Lauritzen JB. Value of routine blood tests for prediction of mortality risk in hip fracture patients. *Acta Orthop* 2012;83:31-35.
25. Seyedi HR, Mahdian M, Khosravi G, Bidgoli MS, Mousavi SG, Razavizadeh MR, Mahdian S, Mohammadzadeh M. Prediction of mortality in hip fracture patients: role of routine blood tests. *Arch Bone Jt Surg* 2015;3:51-55.